

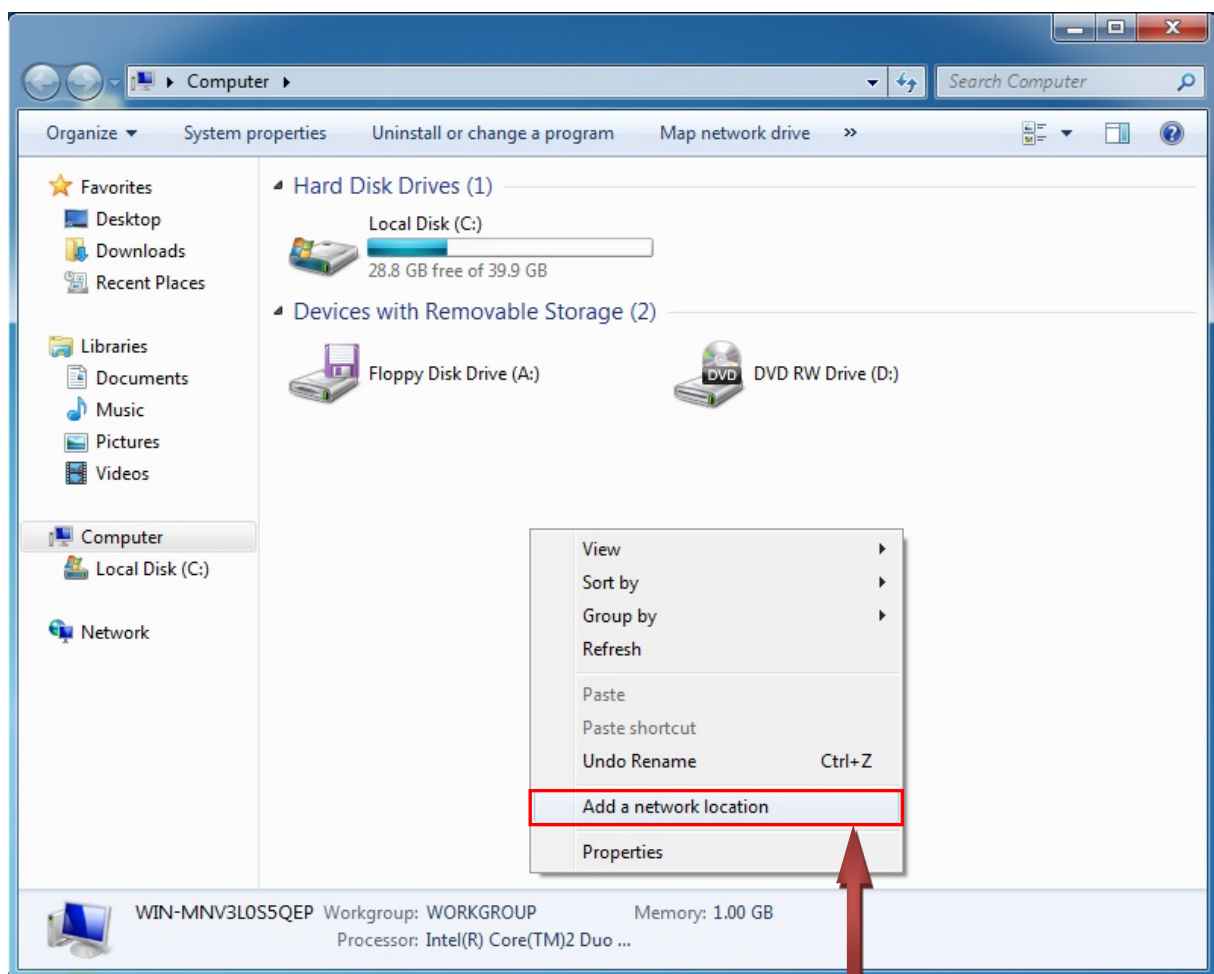
Manual:

Connect to your Home-Folder (H:) and Group-Folder (G:)

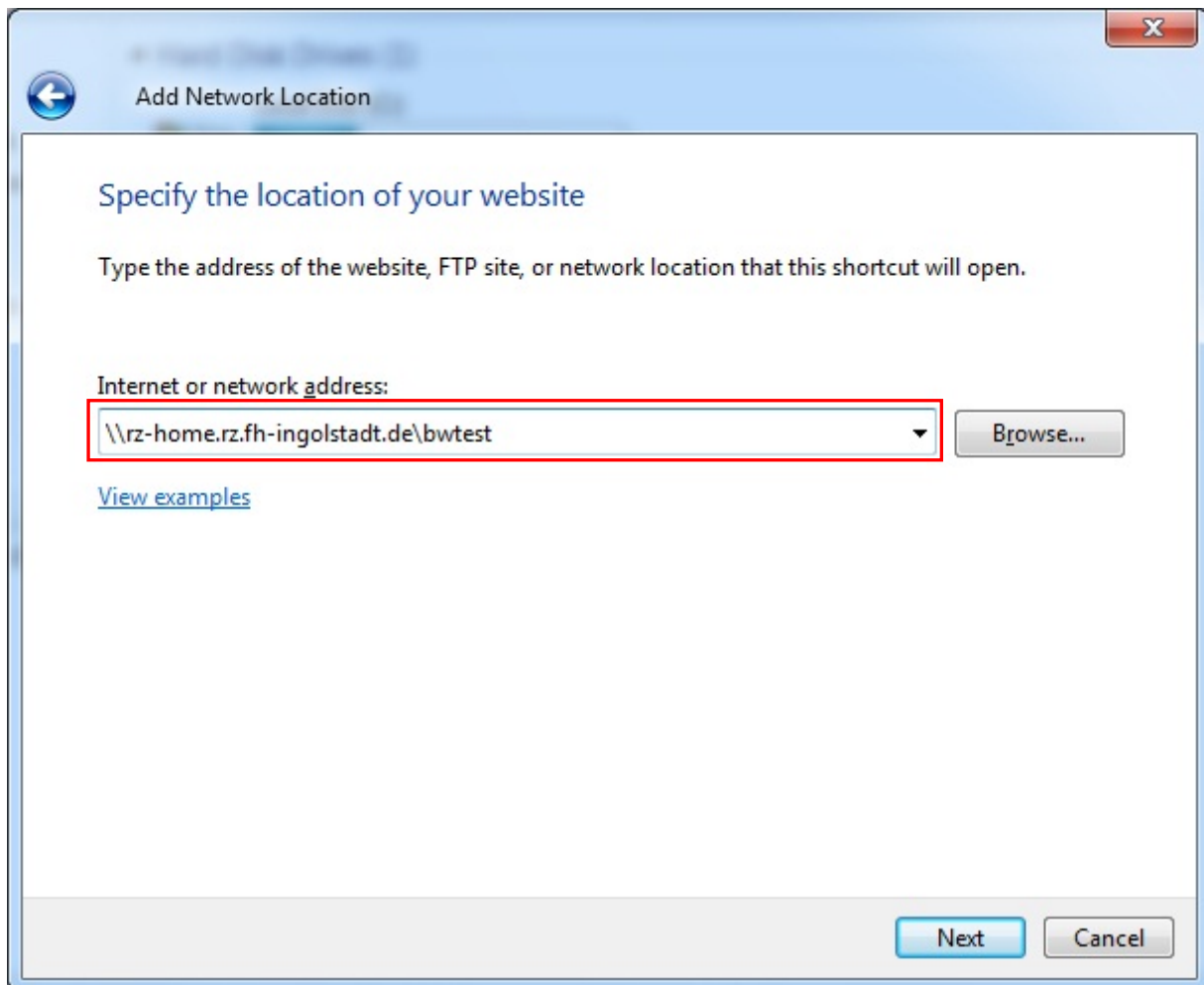
Connect to your Home-Folder (H:) and Group-Folder (G:)

In the Windows-Explorer can be added to network resource. To avoid conflicts with other disk drive letters memory places can be also connected without letter:

A right click on the white surface brings us the following menu in which we on „Add a network location“ click:



As a result opens an assistant with we click 2x on "wide", until we reach the followed window:



Here we give for the H: disk drive the address indicated on top

Attention:

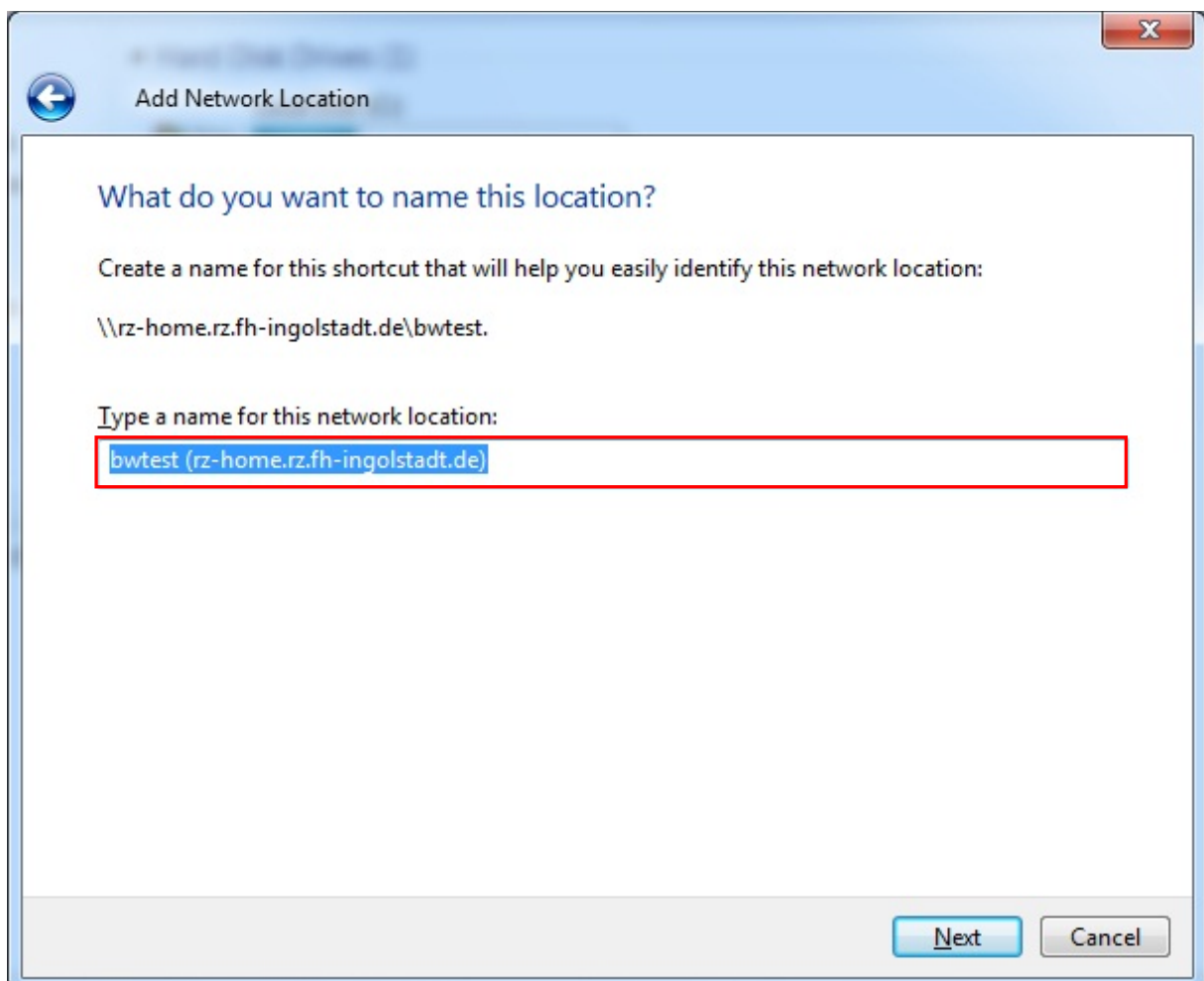
Instead of **bwtest** you must use your **own** user name!

Give afterwards please the call sign of the college in the following window:

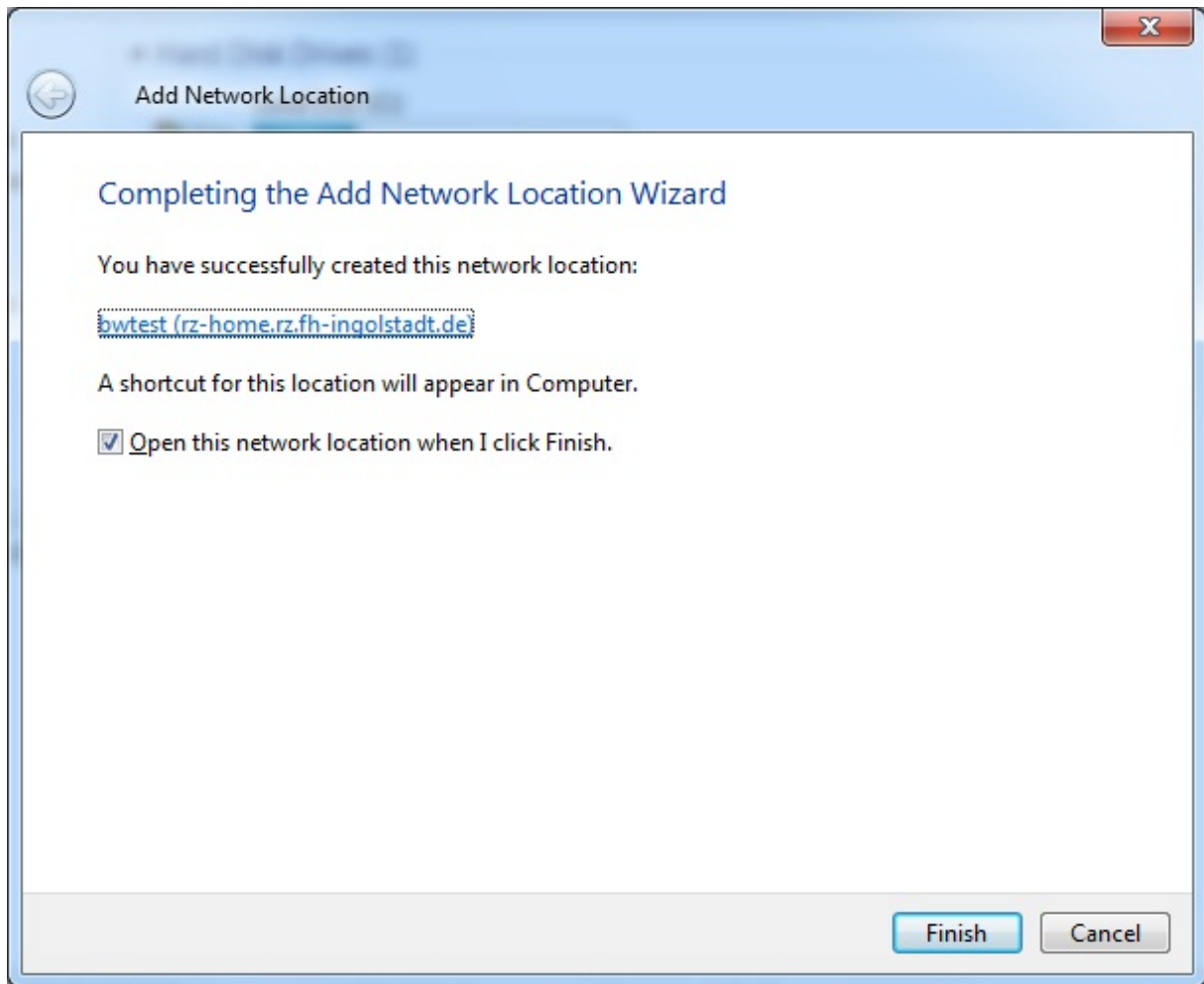


Importantly, besides: Before the call sign our domain "ESPL_001" must be given anyway!

Then appears the following window in which the name of the resource can be given. One can take over the suggested name or award a new:



In the end there is still the news of success:



For the G: disk drive must become just gone forward. Merely with the address stands following in the input field:

