

Apply for the Integration Campus!

Why you should apply

- Take advantage of our special preparation courses and tutorials
- Ideal preparation for the job market
- Take your chance to prepare yourself for university study levels
- Take the chance to receive necessary language skills for a German university study programme
- Start your individual track to a German Master or Bachelor degree

Who should apply

People who:

- couldn't finish their study course in their home country
- have a university degree which is not recognised in Germany
- have 12 years of school and high-school education
- have university entrance qualification
- have proficiency in English (A2 - B1CEFR)
- have a refugee status

Not included in the target group are refugees in reception or deportation centres, similar institutions as well as refugees from so-called safe countries.

How to apply

Application process

- 1. Step:** Make an appointment for a counselling interview at THI. This interview enables you to get a free of charge examination of your documents at UniAssist.
- 2. Step:** Have your documents checked at UniAssist - it might take up to 8 weeks to check your documents.
- 3. Step:** Send the result of UniAssist to integrationscampus@thi.de and receive further information on the application process.

Contact and information

Technische Hochschule Ingolstadt (THI)

The Technische Hochschule Ingolstadt provides education in the fields of technology and business. The students learn to apply scientific methods in professional practice. Our outstanding learning environment provides excellent conditions for study success and job market integration.

Institut für Akademische Weiterbildung (IAW)

As a premium provider in continuous professional education, we offer our students:

- Tailormade contents
- Teaching staff with practical experience
- Practice and transfer-orientation
- Significant development of both, specialist knowledge as well as methodological, social and self-competence

We are happy to answer your questions. Please do not hesitate to contact us for further information.

Technische Hochschule Ingolstadt, Institute for Executive Education (IAW), Esplanade 10, 85049 Ingolstadt.



Verena Sennefelder
Head of Project
Phone: 0841 9348-1505
integrationscampus@thi.de



Kerstin Steidle
Project manager
Phone: 0841 9348-1511
integrationscampus@thi.de



Andrea Schiberna
Project staff
Phone: 0841 9348-1581
integrationscampus@thi.de



Astrid Jedryka
Project staff
Phone: 0841 9348-1582
integrationscampus@thi.de



facebook

Integrationscampus

www.integration-campus.de

accommodation available



Technische Hochschule Ingolstadt

Institut für Akademische Weiterbildung

Integration Campus

Short track to your Bachelor or Master degree



Design your own FUTURE



Dear Sir or Madam,

Welcome to Bavaria and the Ingolstadt region!

It takes bravery to start a new life abroad and intelligence to adapt to new living conditions. We want to support you in this integration process into our society. By qualifying at the THI Integration Campus in Ingolstadt you will further develop your knowledge and professionalize your skills. You will learn about the essential abilities to start a career and become an important part in our society and economy. Depending on your skills and knowledge, we want to give you the chance to start your working career as fast as possible or to begin a German Bachelor or Master programme.

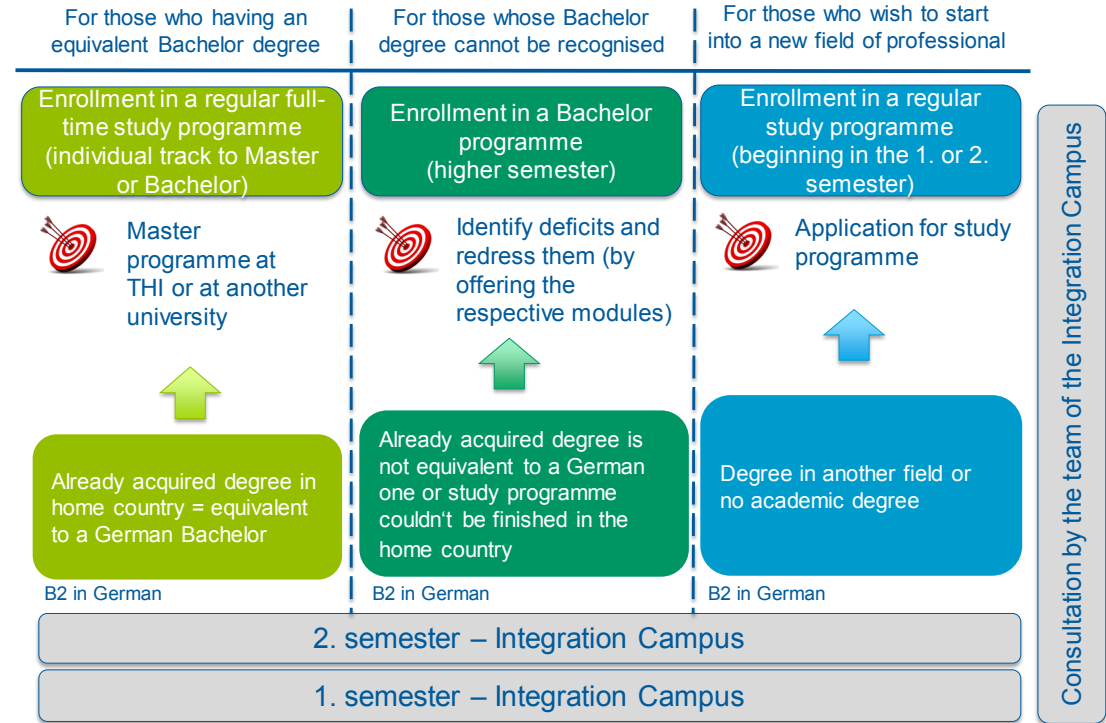
By combining qualification programmes and living at our Ingolstadt Campus and getting support on various aspects from THI you will find the best prerequisites to successfully accomplish your goals.

Thomas Doyé

Aims

- Support the sustainable integration of refugees by organizing a qualification programme.
- Prepare refugees through the designed qualification offer for the regional job market in Bavaria (Ingolstadt and surroundings) or for work in their home countries (reconstruction).
- Support the local economy (lack of skilled labour) by qualifying the refugees in the needed fields.
- Take the social responsibility of the THI and the state seriously to create a pilot project for integrating refugees into our society.

Your individual track to Master or Bachelor



Curriculum

Compulsory		Mandatory	
1. semester	2. semester	3. semester	4. semester
German	German	German	German
English	English	Project management	Digitalisation
IT workshop	Basic knowledge of technology	Orientation course	Process management
Preparation of scientific work and learning techniques	Fundamentals of management and business planning	International management	Refresher course maths

Additional support: Career service, imputation advice, application consultation